

# TB 260 PLUS FENCE

## SAFETY BARRIERS




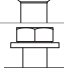

Revision: 30 May 2024 5:04 PM  
Boplan reference: TF2600-...

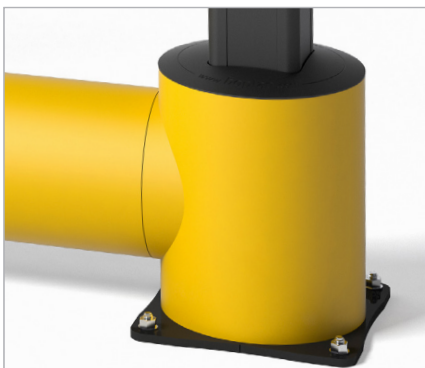


### PRODUCT SPECIFICATIONS

APPLICATION	
Environment	TB 260 Plus Fence provides an effective low to the ground crash protection with machine guard fencing. The low centre of gravity prevents goods or pallets sliding under the barrier.
Impact performance at 90°	POST: 12000 Joule (Eq. to 5ton - 7.9 km/h)
	RAIL: 21200 Joule (Eq. to 5ton - 10.5 km/h)
MATERIAL	
Posts	Extrilene® - UV resistant - Fire class E <sup>+</sup> - Non conductive - Impervious to most chemicals <sup>**</sup>
Mesh	Glass fiber reinforced composite
STANDARD COLOURS	
End post	Yellow RAL 1003
Mid post	Yellow RAL 1003
Impact tube	Yellow RAL 1003
Mesh	Black RAL 9005
BASEPLATES	
	Steel
Material	Steel 37
Coating	Lacquered
Colour	High gloss black

<sup>\*</sup>Classification according to EN 13501-1:2007 +A1:2009 - Fire classification of construction products and building elements.  
<sup>\*\*</sup>Ask your local sales office for resistance to specific chemicals.



		FIXATIONS		
			ZC (Zinc coated)	SS (Stainless steel)
STANDARD	Wedge anchor		M12 x 110mm	M12 x 120mm
	Anchor rod (Chemical)		M12 x 120mm + Chemical resin	M12 x 120mm + Chemical resin
ALTERNATIVES	Concrete screw		Ø12mm x 100mm	Not available
	Asphalt anchor		Bolt M10 x 40mm + Screw Ø16mm	Not available
	Spit anchor		Bolt M12 x 100mm + Plug Ø20mm	Not available



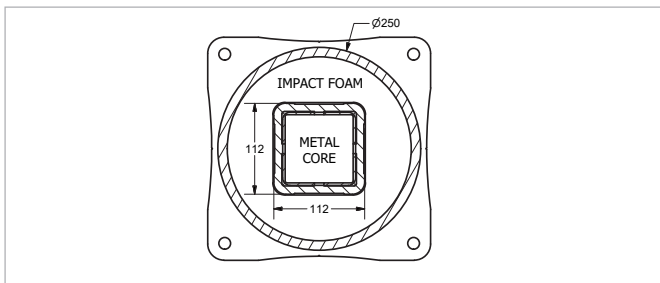
## FEATURES AND FUNCTIONALITY - TB 260 PLUS FENCE

SIZE	
Height end posts	2300 mm
Height mid post	2300 mm
Profile section tubes	Ø200 mm (11 mm thick)
Mesh	1220 mm x 1800 mm (13mm thick) Mesh inner dimension 33 mm x 33 mm
Profile section end posts	Outer tube: Ø250 mm (11 mm thick) Inner profile: 112 mm x 112 mm (10 mm thick)
Profile section mid posts	Profile: 112 mm x 112 mm (10 mm thick)
Standard rail length	1350 mm (center - center dimension) Other sizes: 850 mm - 1349 mm (center - center dimension)
Baseplate	End Post: 275 mm x 275 mm x (10 mm thick) Mid Post: 180 mm x 180 mm x (10 mm thick)

REQUIREMENTS	
Concrete quality	minimum C25/30
Concrete floor plate thickness (mm)	minimum 150 mm
Concrete slab dimension around posts (mm)	600 (h) x 600 (w) x 300 (d)
Operational temperature	-10°C up to +40°C
Water and humidity	<b>Steel</b> (standard): dry indoor use only. <b>Zinc coated:</b> outdoor use in most environments. <b>Stainless Steel:</b> outdoor use or frequent exposure to water and humidity.

 <b>IMPACT LABEL FOR SAFETY BARRIERS</b>		
<b>BOPLAN TB 260 PLUS FENCE</b>		
<b>IMPACT RATING</b>	45°	90° <small>PAS 13:2017 compliant</small>
E80 > 80 kJ		
E60 > 60 kJ		
E50 > 50 kJ		
E40 > 40 kJ		
E35 > 35 kJ	30,0 kJ	
E30 > 30 kJ		
E25 > 25 kJ		21,2 kJ
E20 > 20 kJ		
E15 > 15 kJ		
E10 > 10 kJ		
E5 > 5,0 kJ		
E2 > 2,5 kJ		
<b>TEST CONDITIONS</b>	<b>TEST VEHICLE</b>	<b>ACCREDITED TEST LABORATORY</b>
TEMPERATURE: 20°C IMPACT HEIGHT: 160 mm IMPACT ANGLE: 90° TEST FLOOR: CONCRETE C25/30 - 160 mm MANUFACTURER ANCHOR PULL OUT: 7,9 kN	WEIGHT: 2300 KG TYPE: COMMERCIAL FORK LIFT SIZE (L x W x H): 1890 x 1020 x 1970 mm CONTACT AREA: STEEL BUMPER WIDTH: 600 mm	620 Route des Fromentaux 01500 Saint-Maurice-de-Rémens 01360 Bèlignieux France
<b>SUCCESS CRITERIA</b> VEHICLE STOPPED - ASI (ACCELERATION SEVERITY INDEX) < 0.5		

COMPLIANCE MESH	
Machine directive	The narrow mesh size allows a close safety distance of 200mm towards the danger. (According machine directive 2006/42/EC)
Static point load of mesh	Static point load of 450 N gives a maximum deflection of 15.7 mm.



**REFERENCE LIST - TB 260 PLUS FENCE**

POSTS		
End post - YE	TF2600-0001-EPYE	
End Corner post - YE - 90° - Up	TF2600-0001-CPUYE	
End Corner post - YE - 90° - Down	TF2600-0001-CPDYE	
Mid post - YE	TF2600-0001-MPYE	

CURVES		
Conn.tube Ø250mm - 90° Curve 350mm - YE	TF2600-0350-C259YE	

RAIL SETS			
	Tube length (A)	CC length (B)	REFERENCE
Standard rail	650 mm	900 mm	TF2600-0650-0900YE
Standard rail	800 mm	1050 mm	TF2600-0800-1050YE
Standard rail	950 mm	1200 mm	TF2600-0950-1200YE
Standard rail	1100 mm	1350 mm	TF2600-1100-1350YE

